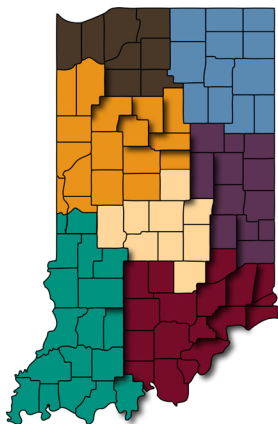


Think Big



Make Change

USING DATA TO FOSTER CHANGE IN OUTCOMES FOR INDIVIDUALS WITH DISABILITIES

ABOUT IIACC

Originated in 2005, the Indiana Interagency Autism Coordinating Council (IIACC) began as a state-mandated entity per the Comprehensive State Plan for Autism Services. With oversight by FSSA, the Council has been facilitated by HANDS in Autism® Interdisciplinary Training & Resource Center since 2014. The IIACC serves as a means for improving shared dialogue, understanding, planning and goal setting with regards to autism services in Indiana.

IIACC MEMBERSHIP

IIACC membership represents the diversity of our community, including families of individuals with autism spectrum disorder (ASD), educators, medical and mental health professionals, first responders, advocates, and a range of other community providers and stakeholders.

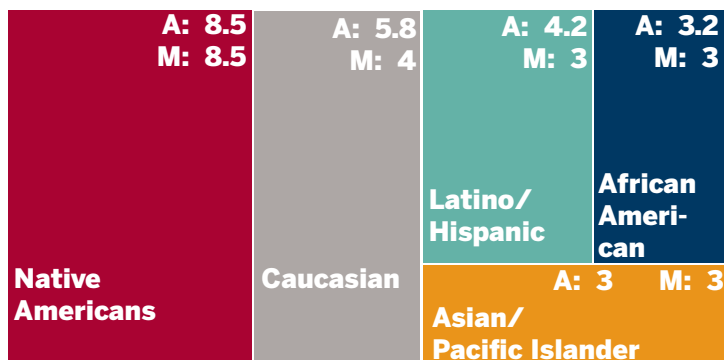
IIACC meetings occur 3-4 times annually and are open to public participation either live or online with registration. Further involvement specific to particular Comprehensive Plan goals is possible through Professional Learning Communities (PLCs), whereas input and involvement specific to particular state regions is available by engaging with the multiple Local Community Cadres (LCCs). Community stakeholders statewide are encouraged to provide ongoing input to inform and expand the resources accessible through the INformation Network website; informed by the community, for the community.

INDIANA AUTISM NEEDS ASSESSMENT

Data is used to inform the IIACC actions and address the goals outlined in the Indiana Comprehensive State Plan for Autism. Over 4,000 Indiana residents (English and Spanish-speaking) across all 92 counties have responded regarding their perspectives related to the state of the State in autism services:

- Individuals with ASD
- Families
- Educators
- Healthcare personnel
- First responders
- Justice and law enforcement
- Other service providers

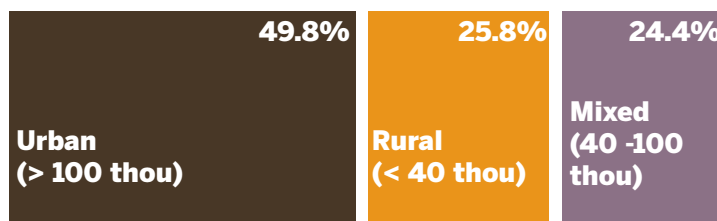
MEAN (A) AND MEDIAN (M) AGE OF DIAGNOSIS BY RACE



BREAKDOWN BY RACE

	Survey Respondents	Indiana Census	US Census
African American	5.2%	9.7%	13.3%
Asian/Pacific Islander	0.9%	2.3%	5.9%
Caucasian	89.0%	85.6%	61.3%
Latino/Hispanic	4.5%	6.8%	17.8%
Native American	0.5%	0.4%	1.3%

RESPONSES BY REGION TYPES*



* Largely representative of the types of regions compared to census data in Indiana and nationwide

USING DATA TO FOSTER CHANGE IN OUTCOMES FOR INDIVIDUALS WITH DISABILITIES

BE INFORMED!

Data is key in making decisions and formulating policies that have the potential to impact large populations of children, youth, and adults with autism spectrum disorder (ASD). Be fully informed!

The following are available to support the needs of communities and policy makers:

- Longitudinal data
- Age stratified data
- Subgrouped data
- Data on hot topics (media, legislation, federal priority areas)



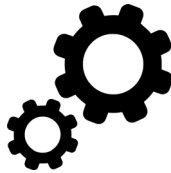
- ASD and related disorders (dual diagnosis, challenging behaviors)
- Social, communication and/or behavioral challenges
- Comprehensive State Plan goal areas (e.g., Access, Early Intervention & Transition, Insurance, Justice, Cultural Responsivity)

- City, county, state, national, federal levels/perspectives



- Extrapolations based on currently collected and monitored federal data (e.g., national core indicators)

- Customizable surveys
- Family, individual, provider, community member interviews



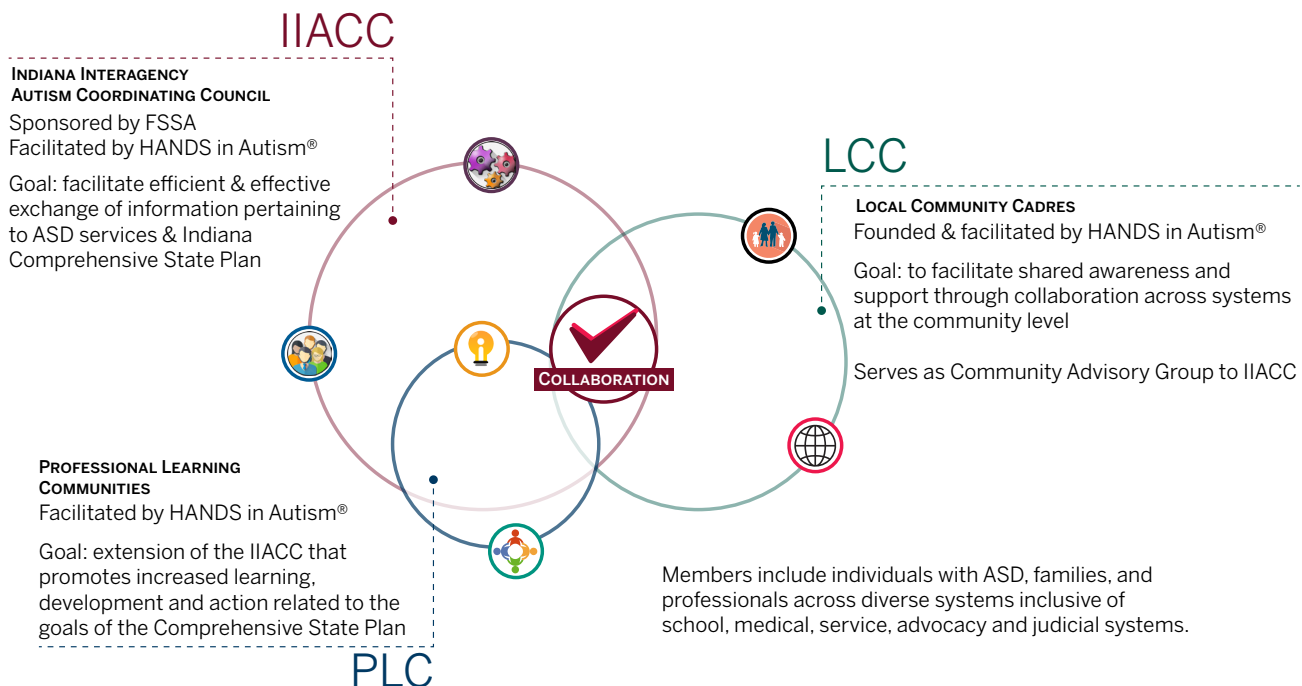
- Focus group guides and questions for use across subgroups and/or Comprehensive State Plan goal (e.g., medical, justice, school, community, insurance, families/caregivers, individuals)

- Network of stakeholder groups for vetting and input, inclusive of:
 - Indiana Interagency Autism Coordinating Council (IIACC)



- Professional Learning Communities (PLCs)
- Local Community Cadres (LCCs)
- Other local and state-level stakeholders and collaborators

NETWORK OF STAKEHOLDER GROUPS



Recommended Citation

Indiana Interagency Autism Coordination Council (IIACC). (2019). Using Data to Foster Change in Outcomes for Individuals with Disabilities, 2019 (last revised). Prepared for the Family and Social Services Administration (FSSA) under facilitation by HANDS in Autism.

Corresponding Author:

HANDS in Autism® Interdisciplinary Training and Resource Center. hands@iupui.edu.